

COMMERCIAL DEVELOPMENT SITE

10019 CHAMBERLAYNE ROAD | MECHANICSVILLE, VA 23116

FEATURES

- **2.4 Acres of Commercial Development Site.**
- **Zoned: B-3.**
- **Close to the intersection of Rt. 301 and Ashcake Road, with 470 feet of direct frontage on Chamberlayne Road.**
- **Within 4 miles of I-295 and 4.5 miles of I-95.**
- Directly adjacent to upcoming *Caldwell Park* with a retail center, 185 townhomes and 232 luxury apartments and *Rutland Grove* (115 Units).
- Surrounded by the well established communities of *Ashcake*, *Kings Charter* and *Knollwood* as well as many upcoming residential projects.
- Located in the highly desirable Hanover County School System, which services around 18,000 students in grades PK and K-12.
- Hanover County boasts a rich history with many historical sites including the birthplace of Patrick Henry and Hanover Courthouse.

SPACE TYPE	Development Site For Sale		
AVAILABLE SPACE	2.4 Acres		
ASKING PRICE	\$1,500,000		
DEMOGRAPHICS	1 Mile	3 Mile	5 Mile
2021 Population	1,513	26,878	61,546
Avg HHH Income	\$117,616	\$131,144	\$112,068
Daytime Employment	478	7,263	35,555
Traffic Count	16,956 VPD on Chamberlayne Road		

* Detailed demographics upon request



Ellen Long:

President / Principal Broker
 804.864.9788 Ext. 101 | 804.539.7793 (m)
 ellenlong@taylorlongproperties.com

Robert Marshall:

Commercial Sales and Leasing
 804.864.9788 Ext. 102 | 804.437.4323 (m)
 robertmarshall@taylorlongproperties.com

10019 Chamberlayne Rd 2.4AC Hanover

Page 1 of 7

CoStar
POWERBROKER
 Top Broker Award

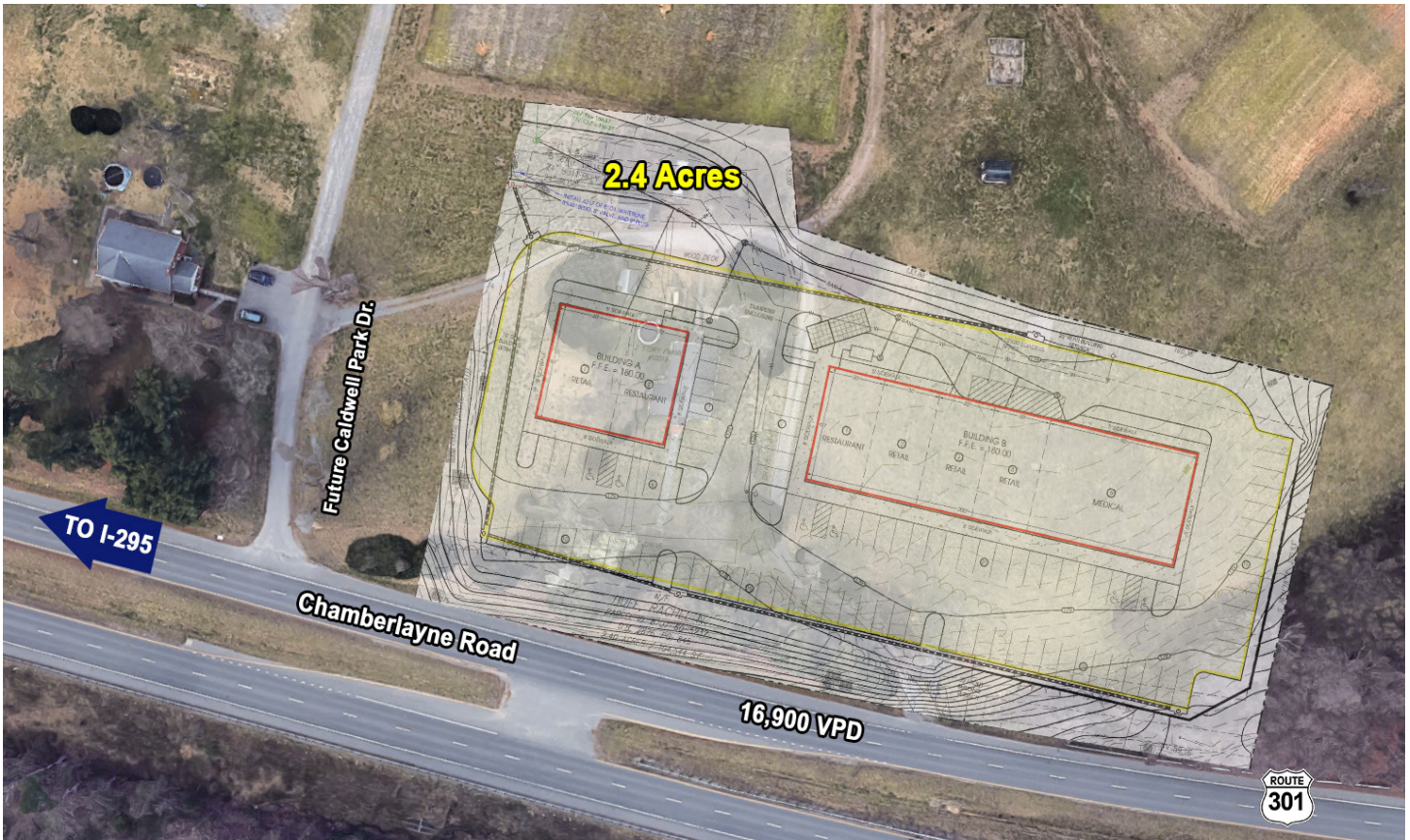
RETAIL BROKERS
 NETWORK

Taylor Long
PROPERTIES
 Commercial Real Estate

Last Modified 06/22/21



AERIAL / LAYOUT PLAN



RETAIL SPACES / PARKING

BUILDING A				
#	Mixed Used	Space	Parking Required	Parking Provided
1	Retail	1,950 SF	32	32
2	Restaurant	1,800 SF	23	23

BUILDING B				
#	Mixed Used	Space	Parking Required	Parking Provided
1	Restaurant	1,800 SF	18	18
2	Retail	1,950 SF	32	32
3	Retail	1,950 SF	32	32
4	Retail	1,950 SF	32	32
5	Medical Office	4,800 SF	24	24



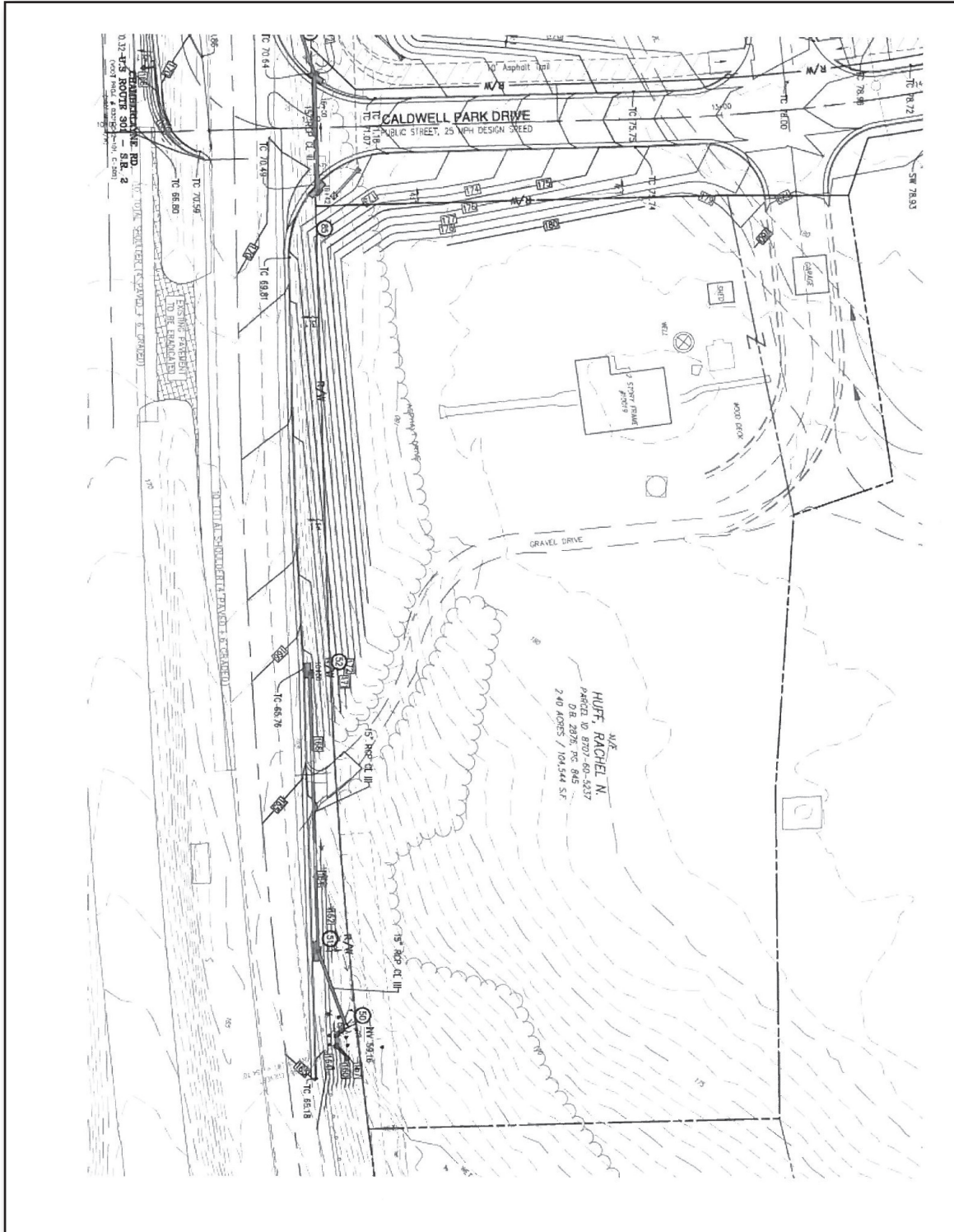


SCHEMATIC LAYOUT



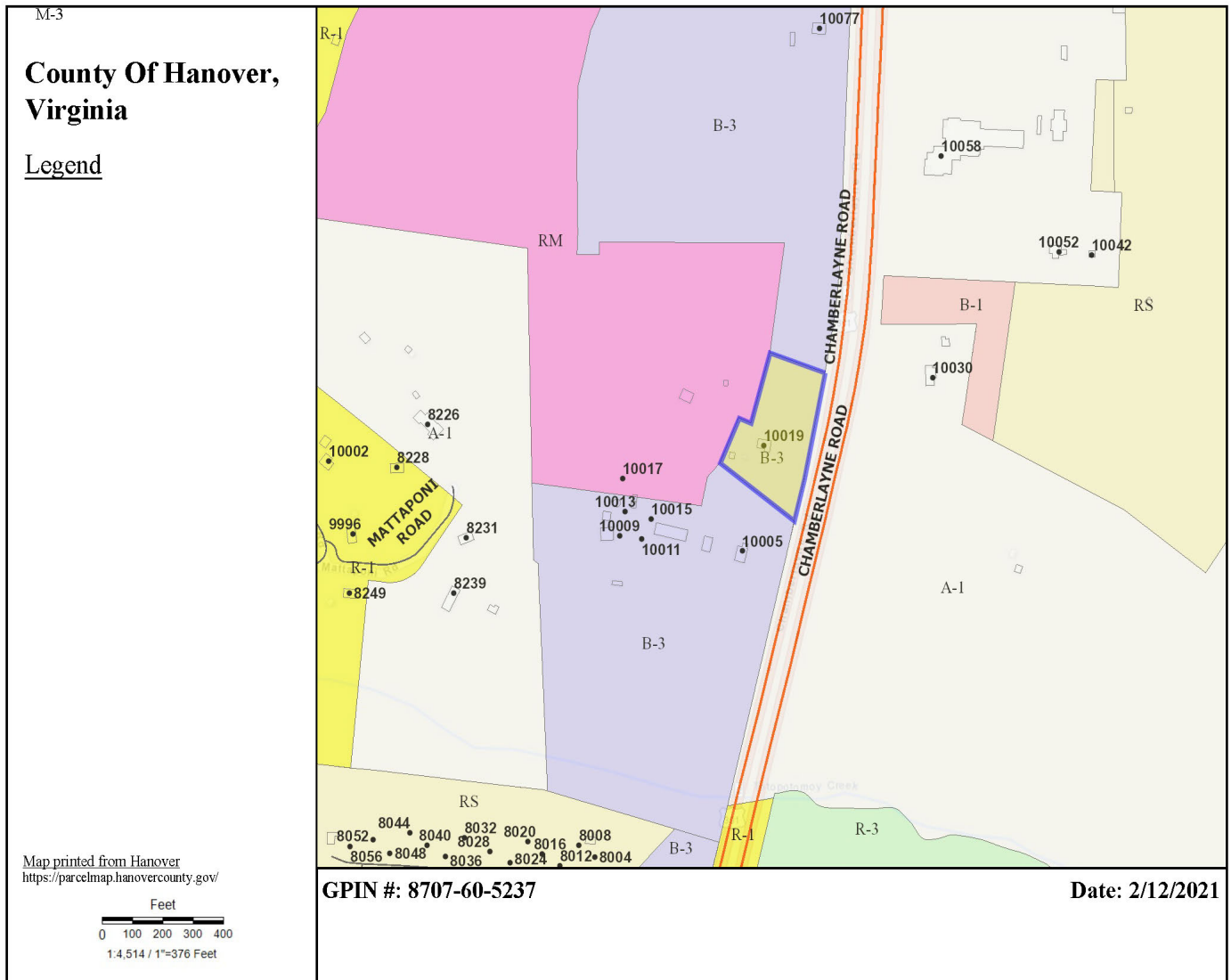


PLAT





ZONING





AERIAL





MAP

